

ALLEGANY-LIMESTONE CENTRAL SCHOOL



Students First

2012-2013 CALENDAR OF EVENTS



ALLEGANY-LIMESTONE CENTRAL SCHOOL DISTRICT

• 3131 Five Mile Road • Allegany, NY 14706 • Phone: 716-375-6600 •

MISSION:

By instilling a sense of inquiry, adaptability, creativity and character, the ALCS community will prepare our students as lifelong learners and problem solvers.



VISION:

- Perspectives
- Potential
- Preparation
- Purpose



ATHLETIC EVENTS:

Sports schedules and Athletic Passes information are located on pages 26-30.

Please Note: All athletic events are subject to change.



ALCS DISTRICT GOALS:

- *By September 1, 2012, ALCS will have a fully implemented Annual Professional Performance Review system which provides usable data on teacher performance and accountability.*
- *By September 1, 2013, ALCS will have a well defined P-12 teaching/assessment system where interim assessment data is used to make instructional decisions and adjustments throughout the school year.*
- *By September 1, 2013, ALCS will have comprehensive policies, professional development, and student programming that focus on respect and dignity in order to prevent bullying and violence in the schools, and that create a positive measurable difference in student climate surveys.*
- *By September 1, 2016, ALCS will have a 90% five year high school graduation rate.*
- *By September 1, 2016, ALCS will achieve Adequate Yearly Progress in English Language Arts and Mathematics for all subgroups including Students with Disabilities.*
- *By June 30, 2014, ALCS will have a fully functioning RtI system with appropriate numbers of children assigned to each tier.*
- *By September 1, 2016, ALCS will increase the number of students scoring 4 (meeting learning standards with distinction) on the State assessments in English Language Arts and Mathematics by 10%.*



ALCS DISTRICT BELIEFS

CORE BELIEFS:

- All students have the capacity to develop their unique potentials
- Learning is the shared responsibility and collaborative effort of students, faculty, staff, families, and community
- Learning occurs best in a safe environment that respects the individual, values different perspectives, and encourages effort
- Learning results from active engagement in relevant, purposeful activities



USING THIS YEAR'S DISTRICT CALENDAR:

Please take the time to look through each month, as information is provided throughout the calendar that will be useful to parents and taxpayers.

| | |
|-------------------|---|
| September..... | Beliefs and Goals |
| October..... | Key Information: Hours of Operation, Academics, Athletics, and the Arts |
| November..... | How To..... See where to go or what to do to address specific concerns or interests |
| December | District Contact and Emergency Closing Information |
| January | Facility Use |
| February | The Role of the Board of Education |
| March | Get Involved...Be A Volunteer |
| April | Dignity For All Students Act |
| May | ALCS Intervention Services |
| June | Clubs Available at ALCS |
| July/August | ALCS Year at a Glance District Calendar |



Students First

CHARACTER TRAIT OF THE MONTH:

Friendship



SEPTEMBER 2012

| Sunday | Monday | Tuesday | Wednesday | Thursday | Friday | Saturday |
|--|-----------------------------|--|--|--|---|------------------------|
| | | |  | **Athletic** Events Subject to **Change** | | 1 |
| 2 | 3 Labor Day No School | 4 Staff Development Day- No School For Students BOE Meeting 6:30 pm | 5 First Day of School for Students | 6 Freshman Welcome Day MS/HS Open House 5:30-7:00 pm | 7 | 8 |
| 9 | 10 | 11 PTO Meeting 6:30 pm | 12 Grade 5 Science Camp | 13 ALES-Meet the Teacher Night 6:00- 7:30 pm Grade 5 Science Camp | 14 Grade 5 Science Camp | 15 |
| 16 All Sports Booster Meeting 7:00-8:00 pm MS/HS Cafeteria | 17 | 18 BOE Meeting 6:30 pm | 19 High School Picture Day | 20 | 21 WNY College Consortium | 22 |
| 23 | 24 | 25 | 26 | 27 Middle School Picture Day Class Ring Orders 11:00-1:00 pm and 5:30-7:00 pm | 28 Senior Composite Retakes/Makeups Homecoming Game | 29 Homecoming Dance |
| 30 | | | | | | |

ALCS KEY INFORMATION

HOURS OF OPERATION:

- ALES students grades K-5 are expected to be in school by 7:50 a.m. School dismisses at 2:30 p.m.
- Middle School students arrive no earlier than 7:20 a.m. Students must be in class by 7:45 a.m. School dismisses at 2:32 p.m.
- High School students arrive no earlier than 7:20 a.m. Students must be in class by 7:45 a.m. School dismisses at 2:32 p.m.
- Universal Pre-Kindergarten hours are as follows AM arrival by 7:45 a.m. dismissal at 10:15 a.m. PM arrival by 11:45 a.m., dismissal at 2:15 p.m.

CODE OF CONDUCT:

The Code of Conduct will be sent home with each student on opening day. It is also available for viewing on the District website: www.alcsny.org

MS/HS SCHEDULES:

The schedules for the Middle School and High School will be almost identical for the upcoming school year. There will be A, B, D, E days that will have 44 minute classes and C, F days that will have 40 minute classes and include an activity period at the end of the day.

SCHOOL MEALS:

Allegheny-Limestone participates in the Federal School Meals Program, and provides reduced cost or free meals to families qualifying because of short or long term economic issues. In these difficult times we strongly encourage families to complete the free/reduced lunch application form. In addition to giving families some relief, the number of families eligible is a factor in determining our school funding and eligibility for certain state and federal grants. Applications are in the next Gator Communicator. They will also be available throughout the year in Health and Counseling offices throughout the district.

School meal prices for 2012-2013 have been established as follows:

- First (1st) Elementary Class "A" Breakfast..... \$1.30
(Reduced Price if qualified)
- First (1st) High School Class "A" Breakfast \$1.30
- First (1st) Elementary Class "A" Lunch..... \$1.80
(Reduced Price if qualified)
- First (1st) High School Class "A" Lunch \$1.80
- Additional Elementary Class "A" Breakfast..... \$1.55
(Full Price)
- Additional High School Class "A" Breakfast..... \$1.55
- Additional Elementary Class "A" Lunch \$2.10
(Full Price)
- Additional High School Class "A" Lunch..... \$2.10

ACADEMIC, ATHLETICS, & ARTS:

Student classroom learning is enhanced through school activities. You will see concerts and special events embedded in each monthly calendar. Sports schedules are located on pages 26-30. The Allegheny and Limestone communities have consistently supported our students through attendance at concerts, plays, special events, and athletic contests. We look forward to your involvement during the 2012-2013 school year.



Students First

CHARACTER TRAIT OF THE MONTH:

Responsibility



OCTOBER 2012

| Sunday | Monday | Tuesday | Wednesday | Thursday | Friday | Saturday |
|--|--|---|--|--|---|-----------|
|  | 1 <i>**Athletic**</i> <i>Events</i> <i>Subject to</i> <i>**Change**</i> | 2 BOE Meeting 6:30 pm | 3 | 4 | 5 Progress Reports ALES Picture Day | 6 |
| 7 | 8 Columbus Day-No School | 9 PTO Meeting 6:30 pm | 10 | 11 | 12 | 13 |
| 14 | 15 All Sports Booster Meeting 7:00-8:00 pm MS/HS Cafeteria | 16 BOE Meeting 6:30 pm | 17 MS/HS Talent Show Auditions 3:00 pm MS/HS Theater PSAT | 18 | 19 | 20 |
| 21 | 22 | 23 MS/HS Talent Show Dress Rehearsal 6:30 pm MS/HS Theater Future Focus at BOCES for 8th Grade | 24 MS/HS Talent Show 7:00 pm MS/HS Theater | 25 | 26 Staff Development Day- No School For Students | 27 |
| 28 | 29 | 30 Connect 4 Meeting 6:30 pm | 31 | <div style="border: 1px solid green; border-radius: 15px; padding: 10px;"> <ul style="list-style-type: none"> • Allegany Fire Engine Company Dinner –1st Thursday 5-7 pm • Allegany American Legion Dinner –last Tuesday 5-7 pm • Allegany American Legion Breakfast –3rd Sunday 8:30-11:30 am </div> | | |

ALCS "HOW TO" ...



Register New Students:

- Call Mrs. Colburn at 375-6600, ext. 2006 to make an appointment

Withdraw a Student:

- MS/HS – Call Guidance Office @ 375-6600, ext. 2105
- Allegany-Limestone Elementary – Call Office @ 375-6600, ext. 4172

Qualify for Free/Reduced Lunch:

- Obtain the necessary application forms in the back to school Gator Communicator or from the Superintendent's Office. Complete forms accurately.
- Phone 375-6600, ext. 2188 if you have any questions.

Change a Student Schedule OR Check on a Student's Academic Progress:

- Contact your child's Counselor @ 375-6600, ext 2105 (M/HS) or ext 4160 (Elementary)

Get career, college, and financial aid information:

- Contact your child's Counselor @ 375-6600, ext 2105 (M/HS)

Obtain Working Papers:

- Pick up necessary forms at the High School Office.

Have Medication Administered During School Hours:

- Bring orders with prescribed dosage from your family physician and a written request from the parent along with medication in the original container. DO NOT send medication in with the student.

Learn about Board of Education Activity:

- The meeting schedule and approved minutes are posted on the District web-site. Agendas are posted approximately one day before the meeting.

Qualify for Vote in School Elections:

- You must be a citizen of the U.S., 18 years of age or older, a resident of the school district 30 days prior to the vote, and be a registered voter with Cattaraugus County Board of Elections.

Inform the Board of Education of an Opinion:

- Attend the monthly Board meetings @ 6:30 pm (See the Calendar for dates), send a message to the BOE email (BOE@alli.wnyric.org), secure a comment form from the District Office or website. *NOTE: Personnel concerns will not be discussed in public. Such concerns should be discussed in advance with the Superintendent of Schools.*

Discuss Bus Questions:

- Contact Mr. Rogers, Transportation Supervisor @ 375-6600, ext. 6612.

Resolve a School-Related Problem:

1. If there is a classroom related problem, contact the teacher first. If it is not resolved, contact the building Principal.
2. If there is a building related problem, contact the building Principal.
3. If your problem goes unresolved at these levels, contact the Superintendent @ 375-6600, ext 2006.
4. If a satisfactory solution still cannot be reached, contact the Board of Education.

Obtain Permission for Use of School Building or Grounds:

- Obtain the necessary application from the District Office or website. Submit the form at least four (4) weeks in advance. Phone 375-6600, ext. 2006 if you have any questions.

Obtain Season Passes for Athletic Events:

- Contact Mrs. Piccioli - @ 375-6600, ext. 2008.

Obtain Classroom Assignments for a Student who is out with a prolonged illness:

- Phone your child's school. Please allow ample time for assignments to be gathered. Make arrangements to pick up assignments by 3:30 p.m.



Students First

CHARACTER TRAIT OF THE MONTH:

Gratitude



NOVEMBER 2012

| Sunday | Monday | Tuesday | Wednesday | Thursday | Friday | Saturday | |
|---|--|---|--|---|---|----------|---|
| **Athletic** Events Subject to **Change** | <ul style="list-style-type: none"> • Allegany Fire Engine Company Dinner –1st Thursday 5-7 pm • Allegany American Legion Dinner –last Tuesday 5-7 pm • Allegany American Legion Breakfast –3rd Sunday 8:30-11:30 am | | | | 1 Grade 4 Chorus Concert 6:30 pm | 2 | 3 |
| 4 Middle/High School Picture Make-Ups | 5 | 6 BOE Meeting 6:30 pm Natural Helpers Retreat | 7 Natural Helpers Retreat | 8 Grade 7-12 Chorus Concert 7:00 pm MS/HS Theater Natural Helpers Retreat | 9 End of Marking Period | 10 | |
| 11 Veteran's Day No School | 12 | 13 PTO Meeting 6:30 pm | 14 ALES Picture Make-ups | 15 Grade 7-12 Band Concert 7:00 pm MS/HS Theater | 16 Report Cards | 17 | |
| 18 All Sports Booster Meeting 7:00- 8:00 pm MS/HS Cafeteria | 19 | 20 BOE Meeting 6:30 pm | 21 Thanksgiving Recess No School | 22 Thanksgiving Recess No School | 23 Thanksgiving Recess No School | 24 | |
| 25 | 26 | 27 | 28 | 29 Early Dismissal 11:15 am for Elementary Students Parent Teacher Conferences-Evening | 30 Early Dismissal 11:15 am for Elementary Students Parent Teacher Conferences- Afternoon Career Horizons at JCC for Sophomores | | |



ALCS CONTACT & EMERGENCY CLOSING INFORMATION

EMERGENCY CLOSING:

When conditions make a school closing likely, tune to the following:

- WHDL 1450 – 95.7 FM (PIG)
- WGRZ – Channel 2
- WIVB – Channel 4
- WKBW – Channel 7

• PLEASE DO NOT CALL THE TV OR RADIO STATIONS!

DISTRICT WIDE OFFICES:

3131 Five Mile Road..... 716-375-6600 (Press 6)
 SuperintendentDr. Karen Geelan
 School Business Executive/District Clerk..... Michael Watson
 Secretary to Superintendent..... Kristin Colburn
 District Treasurer/Account Clerk.....Diana Piccioli
 Tax Collector/Account Clerk..... Pamela Redden
 Director of Instruction and Technology..... Cynthia Havers
 Secretary to Director of Inst/Tech..... Heather Hunt
 Secretary to Director of Inst/Tech..... Angela Moore
 Cafeteria Manager..... Rhonda Powell
 Superintendent of Buildings/Grounds..... Al Bickell

Maple Avenue 716-375-6600
 Special Education Office.....(Press 2)
 Director of Special Education.....Lyn Simons
 Special Education Secretary..... Christine Grimes
 Maple Avenue Ext. (Bus Garage)..... 716-375-6600 (Press 1)
 Transportation Supervisor..... Roy Rogers

Allegany-Limestone Middle/High School Campus

3131 Five Mile Road..... 716-375-6600
 Middle School(Press 9)
 High School(Press 5)
 High School Principal..... Kevin Straub
 Middle School Principal..... Michael Martel
 High School Secretary Tammy Auge
 High School Office Aide..... Maureen Ruether
 High School Office Aide..... Brenda Martin
 Middle School Secretary Libby Stanton
 MS/HS Nurse..... Cheryl Wintermantel
 MS/HS Health Office Aide..... Melisa Rakoska
 High School Counselor
 (grades 10 & 12)..... Jill Bogart
 High School Counselor
 (grades 9 & 11)..... Rose Ruffner
 Middle School Counselor
 (grades 6-8) Christine Conner
 Program Development Counselor ...Greta Gregory
 Counseling SecretaryMary Gergel

Allegany-Limestone Elementary Campus

Maple Avenue Ext.....716-375-6600 (press 3)
 Principal David Taylor
 Secretary Ann Burgess
 Office Aide..... Ethel Freer
 Nurse..... Tina Haberly-Henneman
 Elementary Counselor Ted Costa

BOARD OF EDUCATION 2011-2012:

Email: BOE@alli.wnyric.org • Joe Zimmer (President), Phil Quinlan (Vice-President), Kim Palmer, Jay King, Anne Goergen, Jeff Black, David Farrell, Susan Schifley, Maggie Nuss, Jacob Besok (Student Member)



Students First

CHARACTER TRAIT OF THE MONTH:

Compassion/Caring



DECEMBER 2012

| Sunday | Monday | Tuesday | Wednesday | Thursday | Friday | Saturday |
|--------|---|--------------------------------------|--|--|------------------------|----------|
| | | |  | **Athletic** Events Subject to **Change** | | 1 |
| | 2 Leo Candygram Sales | 3 BOE Meeting 6:30 pm | 4 National Honor Society Induction Banquet Senior Interviews | 5 Grade 3 Chorus Concert 6:30 pm | 6 | 7 8 |
| 9 | 10 | 11 PTO Meeting 6:30 pm | 12 | 13 Grade 6 Band & Chorus Concert 7:00 pm MS/HS Theater | 14 Progress Reports | 15 |
| 16 | 17 Grade 9-12 Band & Chorus Concert 7:00 pm MS/HS Theater | 18 BOE Meeting 6:30 pm | 19 | 20 | 21 | 22 |
| 23 | 24 Winter Recess Christmas Eve | 25 Winter Recess Christmas Day | 26 Winter Recess | 27 Winter Recess | 28 Winter Recess | 29 |
| 30 | 31 Winter Recess | | | | | |

- Allegany Fire Engine Company Dinner –1st Thursday 5-7 pm
- Allegany American Legion Dinner –last Tuesday 5-7 pm
- Allegany American Legion Breakfast –3rd Sunday 8:30-11:30 am

ALCS FACILITY USAGE



FACILITY USE CHARGES (2012-2013):

Charges based on the generalized district cost for maintaining the facilities:

| Category A | Category B | Category C | Category D |
|----------------------|----------------------|----------------------------|---------------|
| Pool | Gym | Auxiliary gym/Weight room | Fields |
| Theater | Cafeteria | Classroom(s) | Tennis Courts |
| | | Concession Stand/Press Box | Track |
| \$30 per hour | \$20 per hour | \$10 per hour | \$0 |

CUSTODIAL FEES:

- Usage supported by a custodian on duty as part of a regular schedule, where the needs of the user are not likely to disrupt the custodian's work will not be charged.
- Usage requiring a custodian when none are scheduled to be on duty, or if the needs of the group are likely to distract the custodian from their regular duties the user will be charged \$20.00 per hour per staff member.
- Special set-up requests will result in labor charges of \$20.00 per hour.

Exempt:

- The Town/Village... as an extension of ongoing efforts to share services and increase efficiencies.
- The three district recognized Booster Clubs (Academic Boosters/PTO, Sports Boosters, and Music/Arts Boosters) will be exempt from charges.

**Individuals/groups wishing to use District facilities can obtain request forms from the District website, or through the District Office.*



Students First

CHARACTER TRAIT OF THE MONTH:

Self-Discipline



JANUARY 2013

| Sunday | Monday | Tuesday | Wednesday | Thursday | Friday | Saturday |
|--|---|---|---|--|---|-------------------------------|
| **Athletic** Events Subject to **Change** |  | 1 Winter Recess | 2 | 3 | 4 | 5 |
| 6 | 7 | 8 BOE Meeting 6:30 pm | 9 | 10 Sophomores BOCES Tour | 11 | 12 |
| 13 | 14 | 15 PTO Meeting | 16 | 17 Grade 5 Chorus and Band Concert 6:30 pm | 18 | 19 |
| 20 Martin Luther King Day No School | 21 | 22 Regents Week BOE Meeting 6:30 pm | 23 Vocal Solo Festival Recital Regents Week | 24 Regents Week | 25 End of Marking Period Early Dismissal 11:15 am Regents Week | 26 Solo Festival (at ALCS) |
| 27 | 28 | 29 Budget Forum 6:30 pm | 30 | 31 Report Cards | | |

- Allegany Fire Engine Company Dinner –1st Thursday 5-7 pm
- Allegany American Legion Dinner –last Tuesday 5-7 pm
- Allegany American Legion Breakfast –3rd Sunday 8:30-11:30 am

ALCS BOARD OF EDUCATION

ROLE OF THE BOE:

In New York State, local Board's of Education have specifically defined duties that focus on the "governance" of the district. Governance involves setting policy, making sure the policies are followed, and authorizing expenditures. This role is different than the "Administration" of the district which involves decisions as to how to best carry out the Board's Policies to the benefit of students. Below are excerpts from the Allegany-Limestone Board of Education's Operating Procedures. They are published here so that the community can be informed and involved.

The Conduct of Board of Education Meetings: The purpose of the meeting is to conduct the business of the district. Open meetings provide the opportunity for the public to observe the process.

Public Comment:

- The public comment section will be used for anyone wishing to address the Board who are not principals or directors.

Executive Session:

Executive session is reserved for specific topics by law that should not be discussed in public.

- If a topic is brought up during the public comment session that is not appropriate the President will stop the speaker. If necessary and at the discretion of the Board President, the topic may be scheduled for an executive session.
- If a topic is brought up in executive session that is not appropriate for executive session the discussion will be stopped and the topic captured for discussion during open session.

BOE MEETINGS:

- Meetings are typically held on the first and third Tuesday of each month, and are noted in the calendar.
- Meeting agendas will be posted on the District's website no later than the Monday morning before the meeting.
- Once minutes are approved by the Board, they will be posted on the District's website.



CHARACTER TRAIT OF THE MONTH:

Honesty



FEBRUARY 2013

| Sunday | Monday | Tuesday | Wednesday | Thursday | Friday | Saturday |
|------------------------------------|--------|--|----------------------------|----------------------------|---|---|
| | | | | | 1 | 2 <i>**Athletic** Events Subject to **Change**</i> |
| 3 | 4 | 5 BOE Meeting 6:30 pm Cap, Gown & Graduation Announcement Orders 11:00 am- 1:00 pm | 6 | 7 ASVAB Testing | 8 All-County Music Festival (Site TBA) | 9 All-County Music Festival (Site TBA) |
| 10 | 11 | 12 PTO Meeting 6:30 pm | 13 | 14 ASVAB Data Review | 15 | 16 |
| 17 President's Day No School | 18 | 19 No School- Mid Break BOE Meeting 6:30 pm | 20 No School- Mid Break | 21 No School- Mid Break | 22 No School- Mid Break | 23 |
| 24 | 25 | 26 | 27 | 28 |  | |

- Allegany Fire Engine Company Dinner –1st Thursday 5-7 pm
- Allegany American Legion Dinner –last Tuesday 5-7 pm
- Allegany American Legion Breakfast –3rd Sunday 8:30-11:30 am

GET INVOLVED...BE A VOLUNTEER

Allegheny-Limestone students benefit from the work of volunteers who make diverse contributions across the district. Examples of the contribution of volunteers include but are not limited to:

- Classroom – general support
- Assistance with learning centers at the elementary level
- Reading to students and classes
- Athletic and/or Music Boosters
- Athletics – support for contests
- Specific expertise e.g. math, entrepreneurship, engineering, motors, art... you name it!
- Parent Teacher Organization (Elementary) and/or Academic Booster Club (Secondary)
- Enrichment Programs e.g. Lego League, Odyssey of the Mind, etc.

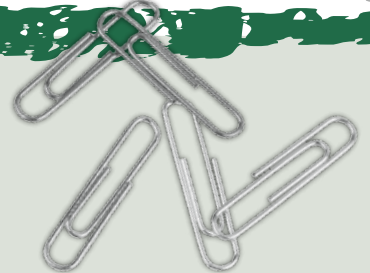
If you have a talent you would be willing to share please begin by contacting the Administrator of the building where you believe your support can be helpful. ALL volunteers must be approved by the Board of Education prior to beginning their work so please call now!



Students First

CHARACTER TRAIT OF THE MONTH:

Cooperation



MARCH 2013

| Sunday | Monday | Tuesday | Wednesday | Thursday | Friday | Saturday |
|--------|---|--|--|---|---|--|
| | | |  | | 1 | 2 |
| | <ul style="list-style-type: none"> • <i>Allegany Fire Engine Company Dinner –1st Thursday 5-7 pm</i> • <i>Allegany American Legion Dinner –last Tuesday 5-7 pm</i> • <i>Allegany American Legion Breakfast –3rd Sunday 8:30-11:30 am</i> | | | | | |
| 3 | 4 | 5 BOE Meeting 6:30 pm | 6 | 7 Grade 6 Band & Chorus Concert 7:00 pm MS/HS Theater | 8 All-County Music Festival at Franklinville Progress Reports | 9 All-County Music Festival at Franklinville Odyssey of the Mind Regional Tournament |
| 10 | 11 PTO Meeting 6:30 pm | 12 | 13 | 14 Grade 7-12 Chorus Concert 7:00 pm MS/HS Theater | 15 Staff Development Day No School | 16 |
| 17 | 18 All Sports Booster Meeting 7:00-8:00 pm MS/HS Cafeteria Middle School Spring Pictures ALES Spring Pictures | 19 BOE Meeting 6:30 pm JCC Accuplacer Placement Test | 20 | 21 Grade 7-12 Band Concert 7:00 pm MS/HS Theater JCC Accu-placer Placement Test | 22 | 23 |
| 24 | 25 | 26 | 27 | 28 | 29 Good Friday No School | 30 <i>**Athletic** Events Subject to **Change**</i> |
| 31 | | | | | | |

DIGNITY FOR ALL STUDENTS ACT

Dignity For All Students Act

The Board of Education recognizes that learning environments that are safe and supportive can increase student attendance and improve academic achievement. A student's ability to learn and achieve high academic standards, and a school's ability to educate students, is compromised by incidents of discrimination or harassment, including but not limited to bullying, taunting and intimidation. Therefore, in accordance with the Dignity for All Students Act, Education Law, Article 2, the District will strive to create an environment free of discrimination and harassment and will foster civility in the schools to prevent and prohibit conduct which is inconsistent with the District's educational mission.


The District condemns and prohibits all forms of discrimination and harassment of students based on actual or perceived race, color, weight, national origin, ethnic group, religion, religious practice, disability, sexual orientation, gender, or sex by school employees or students on school property and at school-sponsored activities and events that take place at locations off school property. In addition, any act of discrimination or harassment, outside of school sponsored events, which can reasonably be expected to materially and substantially disrupt the education process may be subject to discipline.



CHARACTER TRAIT OF THE MONTH:

Fairness

APRIL 2013

| Sunday | Monday | Tuesday | Wednesday | Thursday | Friday | Saturday |
|--|---|---|--|---|--|----------|
| | 1 Spring Break | 2 Spring Break | 3 Spring Break | 4 Spring Break | 5 Spring Break | 6 |
| **Athletic** Events Subject to **Change** | | | | | | |
| 7 | 8 | 9 PTO Meeting 6:30 pm BOE Meeting 6:30 pm | 10 BOCES Annual Meeting | 11 | 12 End of Marking Period | 13 |
| 14 | 15 All Sports Booster Meeting 7:00-8:00 pm MS/HS Cafeteria | 16 NYS Assessments in English Language Arts for Grades 3-8 Budget Forum | 17 NYS Assessments in English Language Arts for Grades 3-8 | 18 Report Cards NYS Assessments in English Language Arts for Grades 3-8 | 19 | 20 |
| 21 | 22 | 23 BOCES Vote BOE Meeting 6:30 pm | 24 NYS Assessments in Math for Grades 3-8 | 25 NYS Assessments in Math for Grades 3-8 | 26 NYS Assessments in Math for Grades 3-8 | 27 |
| 28 | 29 | 30 |  | | | |

- Allegany Fire Engine Company Dinner –1st Thursday 5-7 pm
- Allegany American Legion Dinner –last Tuesday 5-7 pm
- Allegany American Legion Breakfast –3rd Sunday 8:30-11:30 am

ALCS INTERVENTION SERVICES

Years ago when a child struggled he or she would likely have been placed in a specialized program for the year, with minimal assessment of learning progress during the year. Times have changed with the requirement for RtI (Response to Intervention). Districts must now provide more carefully measured and monitored supports throughout the year, to assure that the efforts are actually helping the student. This requirement came at a time when Allegany-Limestone was already restructuring its student support and assessment through the efforts of the Early Intervention Team.

Developing the individual potential of every student requires a team effort that begins in the home, and extends to the classroom. When students fail to make necessary progress additional services are provided through the Classroom Teacher, with the support of a team of specialists. Efforts are closely monitored to measure the effectiveness of these services. Please contact any Building Principal with additional questions. They will connect you to the person who can best answer your questions.



Students First

Core Curriculum: The course of study deemed critical and usually made mandatory for all students of the district. Core curricula are provided in all classrooms across the district and is associated with local, state, and national standards.

Progress Monitoring: Progress monitoring is the assessment of students' academic performance, and progress designed to evaluate the effectiveness of instruction. Progress monitoring can be implemented with individual students or an entire class.

Enhanced Core: Through the use of progress monitoring, students identified as not progressing are provided additional supports by the classroom teacher, with the assistance of the Intervention Team (led by school psychologists in each building).

Differentiated Instruction: Differentiated instruction involves educators adjusting curricula, teaching environments, and instructional practices in order to meet each student's needs. Differentiated instruction recognizes students' varying interests, readiness levels, and levels of responsiveness to the core curriculum and allows teachers to plan instruction in advance to address differences.

Formative Assessment: Formative assessment is a type of evaluation used to plan for and differentiate instruction. With formative assessment, student progress is systematically assessed to provide continuous feedback to both the student and the teacher concerning learning successes and failures. With formative assessment, teachers diagnose skill, ability, and knowl-

edge gaps; measure progress; and evaluate instruction. Formative assessments are not necessarily used for grading purposes.

Summative Assessment: Summative assessment is a type of evaluation used to determine whether an instructional program or specific intervention was effective. Summative assessments are used to measure student learning at the end of a course of study. With required progress monitoring, student progress is measured more often via "benchmark" assessments.

Screening: Screening is a process conducted to identify or predict students who may be at risk for poor learning outcomes. Universal screening tests are typically brief, conducted with all students at a grade level, and followed by additional testing or short-term progress monitoring to corroborate students' risk status.

Strategic Programs: Targeted programs and services are provided by specialists (Academic Intervention Teachers, Speech Therapists, Occupational Therapists, Psychologists, Counselors, etc.) in support of the classroom teacher's efforts when prior efforts have not yielded success for the student. Frequency and duration of services may be increased, and progress will be monitored more often.


Intensive Intervention: Intensive academic and/or behavioral interventions are provided when prior efforts have not yielded success for students. Intensity may be increasing the frequency and duration of services, or by attempting new approaches and monitoring progress more often.

CHARACTER TRAIT OF THE MONTH:

Respect



MAY 2013

| Sunday | Monday | Tuesday | Wednesday | Thursday | Friday | Saturday |
|--|--------|--|--|--|--|---|
| | | | 1 National Honor Society Banquet | 2 | 3 PLAN: Pre-ACT | 4 |
| | | <div style="border: 1px solid black; padding: 5px;"> <ul style="list-style-type: none"> • Allegany Fire Engine Company Dinner –1st Thursday 5-7 pm • Allegany American Legion Dinner –last Tuesday 5-7 pm • Allegany American Legion Breakfast –3rd Sunday 8:30-11:30 am </div> | | | | |
| 5 | 6 | 7 BOE Meeting 6:30 pm | 8 | 9 | 10 | 11 |
| 12 Budget Hearing- Limestone 6:30 pm | 13 | 14 PTO Meeting 6:30 pm Budget Hearing MS/HS Caf e 6:30 pm | 15 | 16 | 17 Progress Reports | 18 Prom |
| 19 All Sports Booster Meeting 7:00- 8:00 pm MS/HS Cafeteria High School Awards Assembly | 20 | 21 BOE Meeting 6:30 pm Budget Vote 6th and 7th Grade Award Ceremony 8:00 am 8th Grade Award Ceremony 6:30 pm | 22 | 23 Arts Festival Gala Concert Early Dismissal 11:15 am for Elementary Students Elementary Education Fair 4:00 pm- 6:00 pm | 24 | 25 <i>**Athletic** Events Subject to **Change**</i> |
| 26 Memorial Day No School Memorial Day Parade 9:00 am | 27 | 28 Grades 4 & 8 NYS Science Performance Test | 29 Grades 4 & 8 NYS Science Perfor- mance Test | 30 Grades 4 & 8 NYS Science Performance Test | 31 Grades 4 & 8 NYS Science Performance Test |  |

ALCS CLUBS AND ACTIVITIES

ALCS CLUBS & ACTIVITIES:

Get involved and be a part of something great!



| High School | | |
|--------------------------|--------------------|-------------------------|
| High School Service Club | Natural Helpers | National Honor Society |
| Friends of Rachel | Drama | Physical Education Club |
| Student Council | Gator Mart | Odyssey of the Mind |
| Student Boosters | Leo Club | Peer Support Group |
| Yearbook | Spanish Club | Ski Club |
| SADD | Interact | Chorus |
| Girls and Boys State | Newspaper | Band |
| History | World Travel Group | Entrepreneurs |

| Elementary School | Middle School | |
|------------------------|---------------------|----------------------------|
| Odyssey of the Mind | Geography Bee | Jazz Band |
| ALPS (Gifted/Talented) | Lego League | Gator Tribe |
| LEAD | Math COUNTS | Friends of Rachel |
| | Odyssey of the Mind | Student Activities Council |
| | Ski Club | |



CHARACTER TRAIT OF THE MONTH:

Leadership

JUNE 2013

| Sunday | Monday | Tuesday | Wednesday | Thursday | Friday | Saturday |
|--------------------------|--|---|--|--|--|----------|
| | | |  | | | 1 |
| | <ul style="list-style-type: none"> • Allegany Fire Engine Company Dinner –1st Thursday 5-7 pm • Allegany American Legion Dinner –last Tuesday 5-7 pm • Allegany American Legion Breakfast –3rd Sunday 8:30-11:30 am | | | | | |
| 2 | 3 Grade 4 & 8 NYS Science Written | 4 BOE Meeting 6:30 pm | 5 | 6 Grade 4 Recorder Concert 6:30 pm | 7 | 8 |
| 9 | 10 | 11 Regents Week PTO Meeting 6:30 pm | 12 Regents Week | 13 Regents Week | 14 Flag Day Regents Week Flag Day Ceremony 9:15 am | 15 |
| 16 | 17 Regents Week All Sports Booster Meeting 7:00-8:00 pm MS/HS Cafeteria | 18 Regents Week BOE Meeting 6:30 pm | 19 Early Release for Elementary Students 11:15 am Regents Week | 20 Early Release for Elementary Students 11:15 am Regents Week | 21 Staff Development Day No School for Students Graduation Practice | 22 |
| 23 Graduation 2:00 pm | 24 | 25 | 26 | 27 | 28 | 29 |
| 30 | | | | | | |

Adopted 5/1/12

Allegheny-Limestone Central School 2012-2013 School Calendar



September

| S | M | T | W | T | F | S |
|----|----|----|----|----|----|----|
| | | | | | | 1 |
| 2 | 3 | 4 | 5 | 6 | 7 | 8 |
| 9 | 10 | 11 | 12 | 13 | 14 | 15 |
| 16 | 17 | 18 | 19 | 20 | 21 | 22 |
| 23 | 24 | 25 | 26 | 27 | 28 | 29 |
| 30 | | | | | | |

Students-18 Staff- 19

October

| S | M | T | W | T | F | S |
|----|----|----|----|----|----|----|
| | 1 | 2 | 3 | 4 | 5 | 6 |
| 7 | 8 | 9 | 10 | 11 | 12 | 13 |
| 14 | 15 | 16 | 17 | 18 | 19 | 20 |
| 21 | 22 | 23 | 24 | 25 | 26 | 27 |
| 28 | 29 | 30 | 31 | | | |

Students-21 Staff-22

November

| S | M | T | W | T | F | S |
|----|----|----|----|----|----|----|
| | | | | 1 | 2 | 3 |
| 4 | 5 | 6 | 7 | 8 | 9 | 10 |
| 11 | 12 | 13 | 14 | 15 | 16 | 17 |
| 18 | 19 | 20 | 21 | 22 | 23 | 24 |
| 25 | 26 | 27 | 28 | 29 | 30 | |

Students-18 Staff- 18

December

| S | M | T | W | T | F | S |
|----|----|----|----|----|----|----|
| | | | | | | 1 |
| 2 | 3 | 4 | 5 | 6 | 7 | 8 |
| 9 | 10 | 11 | 12 | 13 | 14 | 15 |
| 16 | 17 | 18 | 19 | 20 | 21 | 22 |
| 23 | 24 | 25 | 26 | 27 | 28 | 29 |
| 30 | 31 | | | | | |

Students-15 Staff- 15

January

| S | M | T | W | T | F | S |
|----|----|----|----|----|----|----|
| | | 1 | 2 | 3 | 4 | 5 |
| 6 | 7 | 8 | 9 | 10 | 11 | 12 |
| 13 | 14 | 15 | 16 | 17 | 18 | 19 |
| 20 | 21 | 22 | 23 | 24 | 25 | 26 |
| 27 | 28 | 29 | 30 | 31 | | |

Students- 21 Staff-21

Schools/Offices Closed

Mon. Sept. 3 Labor Day
 Mon. Oct. 8 Columbus Day
 Mon. Nov. 12 Veteran's Day
 Nov. 22 & 23 Thanksgiving
 Dec. 24, 25, 31, Jan. 1 Winter Recess
 Mon. Jan. 21 M. L. King Day
 Mon. Feb. 18 President's Day
 Fri. Mar. 29 Good Friday
 Mon. May 27 Memorial Day

Vacations/Offices Open

Wed. Nov. 21 Thanksgiving
 Offices Open Dec. 26, 27, 28
 Winter Recess
 Feb. Break 19-22
 Apr. Spring Break 1-5

Staff Development & Rating Days

Tues. Sept. 4
 Fri. Oct. 26
 Fri. March 15
 Fri. June 21

Additional Notations

Parent/Teacher Conferences
 Early Release for All Students
 Early Release for Elementary Students
 End of Marking Period
 Report Cards Sent

Special Events/Test Dates

Open House ALES Thurs. Sept. 13
 M/HS Thurs. Sept. 6
 Freshman Welcome Thurs. Sept. 6
 Regents Week Jan. 22-25
 June 11-20
 Gr. 3-8 NYS Test April 16-18
 April 24-26
 Graduation Sunday, June 23

Semester 1

Students 93 Staff 95

Semester 2

Students 87 Staff 89

Total Days:

Students-180
 Staff-184

February

| S | M | T | W | T | F | S |
|----|----|----|----|----|----|----|
| | | | | | 1 | 2 |
| 3 | 4 | 5 | 6 | 7 | 8 | 9 |
| 10 | 11 | 12 | 13 | 14 | 15 | 16 |
| 17 | 18 | 19 | 20 | 21 | 22 | 23 |
| 24 | 25 | 26 | 27 | 28 | | |

Students-15 Staff- 15

March

| S | M | T | W | T | F | S |
|----|----|----|----|----|----|----|
| | | | | | 1 | 2 |
| 3 | 4 | 5 | 6 | 7 | 8 | 9 |
| 10 | 11 | 12 | 13 | 14 | 15 | 16 |
| 17 | 18 | 19 | 20 | 21 | 22 | 23 |
| 24 | 25 | 26 | 27 | 28 | 29 | 30 |
| 31 | | | | | | |

Students- 19 Staff-20

April

| S | M | T | W | T | F | S |
|----|----|----|----|----|----|----|
| | 1 | 2 | 3 | 4 | 5 | 6 |
| 7 | 8 | 9 | 10 | 11 | 12 | 13 |
| 14 | 15 | 16 | 17 | 18 | 19 | 20 |
| 21 | 22 | 23 | 24 | 25 | 26 | 27 |
| 28 | 29 | 30 | | | | |

Students- 17 Staff- 17

May

| S | M | T | W | T | F | S |
|----|----|----|----|----|----|----|
| | | | 1 | 2 | 3 | 4 |
| 5 | 6 | 7 | 8 | 9 | 10 | 11 |
| 12 | 13 | 14 | 15 | 16 | 17 | 18 |
| 19 | 20 | 21 | 22 | 23 | 24 | 25 |
| 26 | 27 | 28 | 29 | 30 | 31 | |

Students- 22 Staff-22

June

| S | M | T | W | T | F | S |
|----|----|----|----|----|----|----|
| | | | | | | 1 |
| 2 | 3 | 4 | 5 | 6 | 7 | 8 |
| 9 | 10 | 11 | 12 | 13 | 14 | 15 |
| 16 | 17 | 18 | 19 | 20 | 21 | 22 |
| 23 | 24 | 25 | 26 | 27 | 28 | 29 |
| 30 | | | | | | |

Students-14 Staff- 15

Support athletics at Allegany-Limestone Central School!

Join the...

ALCS ALL-SPORTS



BOOSTER CLUB

DONATIONS

Donations to the ALCS All-Sports Booster Club directly benefit the student athletes that represent our school and community. A donor to the club can make a gift that best suits his or her budget. A minimum gift level of \$5.00 is requested.

MEETINGS

Meetings are generally held the first Monday of each month in the M/H school dining hall. All members are welcome. Thank you for your support!!!

ALCS ALL-SPORTS BOOSTER CLUB DONOR INFORMATION/MEMBERSHIP FORM

Name: _____ Class of: _____

Address: _____

City: _____ ST: _____ Zip: _____

Phone (H): _____ (W): _____

Please check if you are interested in volunteering for:

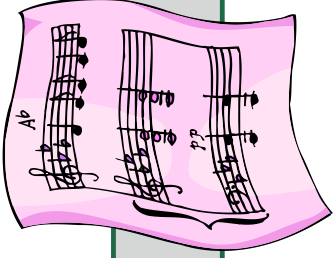
_____ 50/50 _____ Awards Dinner _____ As Needed

THANK YOU FOR SUPPORTING ALLEGANY-LIMESTONE ATHLETICS!

Mail Donation/Membership form to:
Allegany-Limestone All Sports Booster Club
C/O Allegany-Limestone Central School
3131 Five Mile Road • Allegany, N.Y. 14706

Support music programs at Allegany-Limestone Central School!

Join the...



ALCS MUSIC

BOOSTERS

BECOME A MEMBER OF ALCS MUSIC BOOSTERS:

PURPOSE

1. To guide and help with the Allegany-Limestone School's musical activities as determined by the organization and the music teachers of the district.
2. To set up student scholarships for music study.

MEMBERSHIP

All parents of the Allegany-Limestone music students (past and present) and the music teachers are eligible to be members. Other interested individuals may become members upon approval of current members at a regular scheduled meeting of the organization.

MEETINGS

All meetings are held on the 2nd Tuesday of each month at 7:00 p.m. in the ALCS Music Room. (Contact president for meeting dates.)

INFORMATION

To receive e-mail notification and updates, please contact Music Booster President Marcia Wymer at Marcia@wymercpa.com

Join the...

ALCS ACADEMIC



BOOSTER CLUB

Your membership (minimum of \$5.00 per student) supports:

- Three quarterly recognitions for students on the honor roll as well as those students recommended by teachers.
- Academic pins given each September to students who achieved honor roll for all four quarters of the previous school year.
- Scholarships for graduating seniors whose families have been paid members of Academic Boosters for at least 3 years of the student's middle/high school years.
 - Scholarships awarded based on weighted grade point average.
 - The number of scholarships awarded is determined by donations received that year.
- National Honor Society Induction Dinner
- June Awards Ceremonies – Middle/High School
- Staff Appreciation Day – Middle/High School and Bus Garage

For more information, please visit our web page on the school's website at www.alcsny.org. Click on "Our Community", "School Boosters Organizations, and then select "Academic Boosters"

A-L ABC Membership Form

Please return this portion with your dues to the middle/high school office or mail to:

Allegany-Limestone Middle/High School c/o A-L Academic Booster Club
3131 Five Mile Rd
Allegany, NY 14706

Name: _____

A - \$5-10

B - \$11-25

C - \$26-50

D - \$51-99

E - \$100 +

F - One-time individual Student Membership*

* a one-time minimum donation of \$45 per student prior to student's sophomore year will count as three year requirement. Timing may be waived for students new to Allegany-Limestone.

Membership Categories

Address: _____

Phone: _____

Student(s)' names and graduating year: (middle and high school students only) _____

Make checks payable to: **A-L Academic Booster Club**
Amount Enclosed _____ Membership Category _____ Date Payment Sent _____

Would you be willing to volunteer time or baked goods for planned events? Yes _____ No _____
May we call you for help when the need arises? Yes _____ No _____

_____ I authorize Allegany-Limestone CS to release my child's senior class ranking to the A-L Academic Booster Club for the purpose of scholarship consideration. Kindly place your initials in the line to the left.

2012-2013
Allegany-Limestone Elementary School PTO
Membership Application

Please Print

Parent(s) name _____

Address _____

Home phone _____ best time to reach you _____

EMAIL ADDRESS _____

Children's Names _____

Teacher _____

Grade _____

Membership \$ 5.00 per family

Additional Donation to the PTO \$ _____ (optional)

Total Amount Enclosed \$ _____

**Thank you for joining and supporting YOUR children
through the PTO**